

SMS

AGRO

HEAVY DISC CULTIVATOR

SUPERIOR

for fertile and healthy soil



WWW.SMSCZ.CZ



SUPERIOR

THE UNSTOPPABLE SHANK



Type
semi-carried,
hydraulically
folded



**Working
range**
5 and 6 m



**Working
depth**
up to 18 cm



**Working
speed**
up to 16 km/h



**Diameter
of discs**
610 mm (24")



Application
shallow and deep
tillage, pre-sowing
preparation



**EU
homologation**



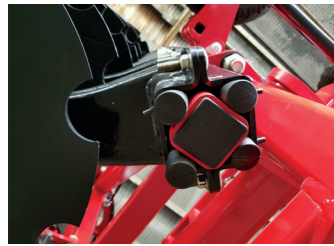
Durable disc tines

Working units are made of forged tines and welded parts and can handle heavy soils full of residues. The discs themselves are mounted on maintenance-free, high load-carrying capacity bearings from the world's leading manufacturers.



Double tines

Double working units hold depth well while following the terrain, have excellent lateral torsional strength, thus holding in position and minimizing lateral deflection even at maximum working speeds. Thanks to the two-arm concept, the discs have extra durability, as the twin-tines used spread wear over a wider mounting area.



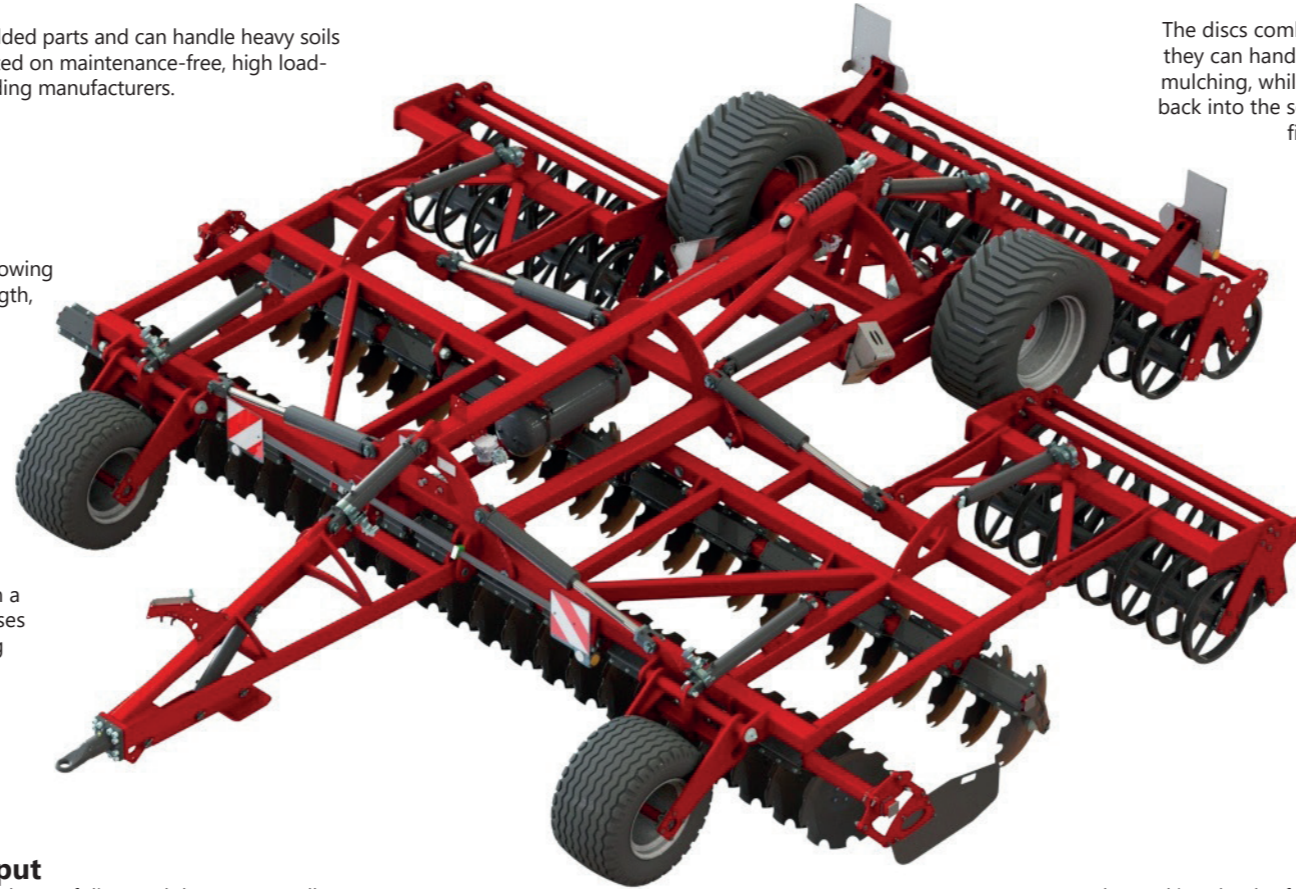
Mounting on robust rubber silentblocks

Each twin-tine disc is mounted to the frame on a long, durable rubber silent block, which increases its rigidity and durability even in harsh working conditions, and can easily handle unexpected obstacles such as rocks.



Excellent plant residue throughput

The extended distances between the 1st and 2nd row of discs and the support roller guarantee extremely good passage of crop residues through the machine, even at high speeds.



Two rows of 610 mm diameter discs from premium producers

The discs combine speed and power with every pass of the machine, so they can handle crop residues with ease. The first row ensures excellent mulching, while the second row takes care of turning and incorporating back into the soil. The high-strength hardened steel discs used are from first-class manufacturers and guarantee a long service life.



Suspended centre roller for better work quality

Due to the integrated axle, the support rollers are divided into three parts, with the centre roller behind the machine wheels being sprung to improve the quality of work, especially in heavier conditions and at higher speeds.



Integrated axle for increased machine stability

The integrated axle behind the discs and in front of the levelling rollers guarantees greater stability of the machine when working and efficiently loads it. During transport, the SUPERIOR has excellent manoeuvrability.



Machine working depth up to 18 cm

The working depth of the machine can be up to 18 cm and can be adjusted either mechanically or, the SUPERIOR can be equipped with a hydraulic control.



TECHNICAL DATA

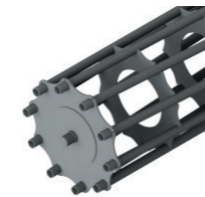
SUPERIOR		500	600
Working width	[m]	5	6
Transport width	[cm]	299	299
Weight*	[kg]	6 340	6 920
Number of disks	[ks]	40	48
Max. working depth	[cm]	18	18
Number of working frames	[ks]	2	2
Minimum tractor power	[kW/HP]	140/190	190/250
Connection		K80 (standard), eye 51 mm	
Support wheels		19/45-17	
Transport wheels		550/45-22,5	

*Machine weight varies depending on the specification selected.

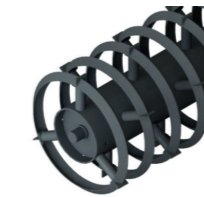
ACCESSORIES



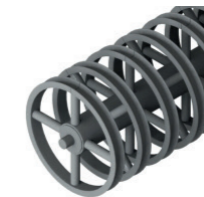
DISC STANDARD
610mm
disc thickness 6 mm



TUBE ROLLER
ø 540mm, suitable
for usual conditions



CRACKER ROLLER
ø 540mm, excellent
crushing effect



U-ROLLER
ø 540mm, excellent
crushing effect



SPRING ROLLER
ø 520mm, resistance
to sticking



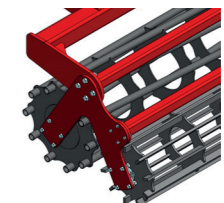
DISC LABRADOR
610mm
disc thickness 6 mm



DDL ROLLER
ø 560mm, excellent
crushing and compacting
effect



DOUBLE U-ROLLER
ø 540mm, excellent
self-cleaning and
crushing effect



**TUBULAR AND
BAR ROLLER**
ø 540mm + 400mm
extra fine crushing effect

FAST AND POWERFUL

With a high working speed of up to 16 km/h, SUPERIOR saves you time. In addition, it also saves you costs by using it for both post-harvest and pre-sowing preparation. The machine is also appreciated for its ability to work the soil more deeply with intensive mixing of crop residues.



APPLICATION

- Suitable for minimisation technology, but also for conventional ploughing systems or for the maintenance of permanent grassland.
- Rapid shallow or even deep tillage (up to 18 cm).
- All-round aeration and intensive mixing of plant residues.
- Even incorporation of plant residues into the soil over the entire area.
- Pre-sowing soil preparation after ploughing or cultivation.
- Restoration of the water regime and improvement of precipitation.
- Re-consolidation and improved soil moisture release.



SMS

AGRO

f @smasz.machinery

ig @smasz_machinery

WWW.SMSCZ.CZ

SMS CZ s. r. o.
smasz@smasz.cz

U Saské brány 12, Rokycany, 337 01
+420 371 722 137



Funded by
the European Union