



HEAVY DISK CULTIVATOR

SUPERIOR G

High working performance even
at maximum speeds



WWW.SMSCZ.CZ



SUPERIOR G

HIGH PERFORMANCE EVEN AT MAXIMUM SPEEDS



Type
semi-carried,
hydraulically
folded



Working width
8, 10 and 12 m



Working depth
up to 18 cm



Working speed
up to 16 km/h



Diameter of discs
610 mm (24")



Application
shallow and deep
tillage, pre-sowing
preparation



EU homologation



Forged tines and durable disc attachment

The forged tines ensure a robust and rigid disc guide that can handle tough conditions. Discs from premium producers are mounted on durable, maintenance-free, premium quality bearings.



Double tines

Double tines hold depth well while following the terrain, have excellent lateral torsional stiffness, thus holding in position and minimizing lateral deflection even at maximum operating speeds. Thanks to the double-arm concept, the stresses on the working organs are spread over a larger area, thus achieving greater durability and efficiency of the working units.



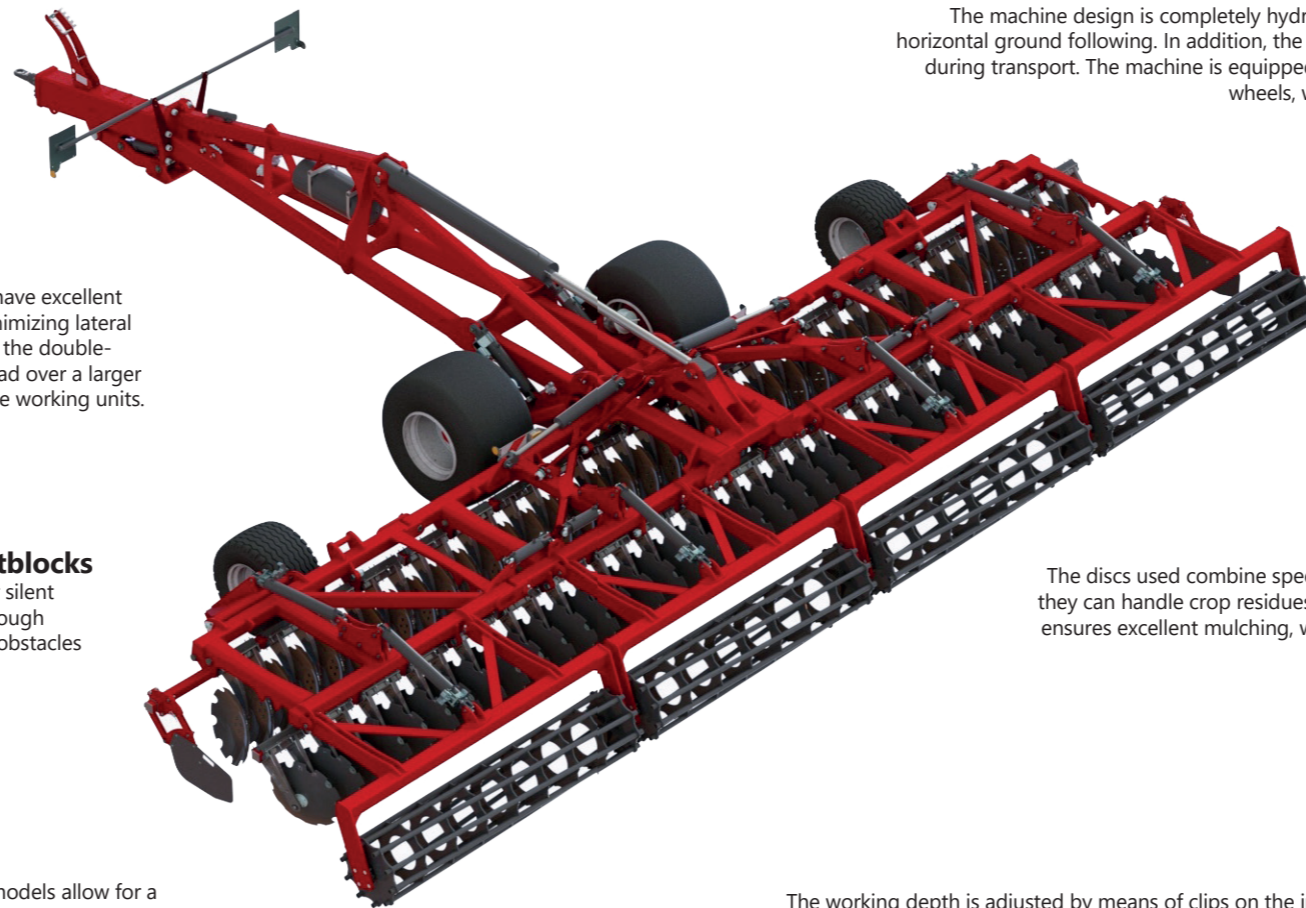
Mounting of tines on long rubber silentblocks

Each twin-tines disc is attached to the frame using rubber silent blocks, which increases its rigidity and durability even in tough working conditions and can easily cope with unexpected obstacles such as stones.



Unique terrain copying in lateral and longitudinal direction

The four separate working frames of the 1000 and 1200 models allow for a maximum wing swing of up to 3° + 3° of the outermost sections, resulting in unique lateral terrain following. In the longitudinal direction, a swing of up to 3° is possible. In addition, the copying effect can be locked by a hydraulic circuit.



Transport position and wide wheels

The machine design is completely hydraulically folded forward, allowing vertical and horizontal ground following. In addition, the SUPERIOR G has a wide axle for high stability during transport. The machine is equipped with wide flotation axle wheels and support wheels, which leads to a reduction in soil compaction.



Simple hydraulic machine control

The hydraulic circuit controls the machine depth and unlocks the wings for ground following.



High machine throughput

The discs used combine speed and power in every pass of the machine, so they can handle crop residues, intercrops or stubble with ease. The first row ensures excellent mulching, while the second row takes care of turning and backfilling, thus improving soil quality.



Working depth up to 18 cm

The working depth is adjusted by means of clips on the individual hydraulic cylinders and controlled by a single hydraulic circuit. The machine can thus be quickly and easily adjusted to suit the conditions.



TECHNICAL DATA

SUPERIOR G		800	1000	1200
Working width	[m]	8	10	12
Transport width	[mm]	2 750	2 990	2 990
Weight	[kg]	8 300	11 500	12 700
Number of discs	[units]	64	80	96
Max. working depth	[cm]	18	18	18
Number of working frames	[units]	2	4	4
Minimum tractor power	[kW/HP]	240/320	280/375	320/430
Connection		K80 (standard), eye Ø 51 mm		
Transport wheels		550/45-22,5	700/40-22,5	700/40-22,5
Support wheels		19/45-17		

*Weight of machine with tube roller

ACCESSORIES

DISCS

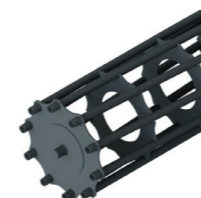


DISC STANDARD
610 MM
disc thickness 6 mm



DISC LABRADOR
610 MM
disc thickness 6 mm

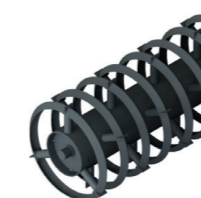
ROLLERS



TUBE ROLLER
ø 540 mm
suitable for normal conditions



U-ROLLER
ø 540 mm
excellent crushing effect



CRACKER ROLLER
ø 540 mm
excellent crushing effect



SPRING ROLLER
ø 520 mm
resistance to sticking



DDL ROLLER
ø 560 mm
excellent crushing and
compacting effect

FOR LARGE AREAS

The heavy-duty Superior G disc disc cultivator is designed for large enterprises with a need for high daily output from 100 hectares per working shift. Its high quality mixing action makes it suitable for pre-sowing soil preparation.



APPLICATION

- Rapid shallow or even deep tillage (up to 18 cm).
- Comprehensive cutting and intensive mixing of plant residues in the full scale of the machine.
- Uniform incorporation of plant residues into the soil over the entire area.
- In combination with a suitable support roller, the machine is also suitable for pre-sowing soil preparation.
- Restoring the water regime and improving water infiltration.
- Wide transport and support wheels to minimise soil compaction.



SMS

AGRO

 @smscz.machinery

 @smscz_machinery

WWW.SMSCZ.CZ

SMS CZ s. r. o.
smscz@smscz.cz

U Saské brány 12, Rokycany, 337 01
+420 371 722 137



Funded by
the European Union